

RUNESTONE GO KART ASSOCIATION

2021 Rules and Regulations

Listed below are the Runestone Go Kart Association's (RGKA) rules and regulations for 2021. The rules have been written and approved by the elected board members for the 2021 racing season. The compliance of the rules will be enforced to the best of our ability to keep all drivers, track officials, pit crews and spectators safe to ensure that they are able to enjoy the great sport of racing.

Table of Contents

Mission Statement	1
Membership and Entry Fees	2
Registration	3
Racing Rules	4
Ground Rules	7
Chassis Rules	10
Parent Code of Conduct	12
Classes.....	13
Wing Kart Rules	14

****THE ASSOCIATION RESERVES THE RIGHT TO AMEND ANY RULE OR REGULATION AT ANY TIME AND IN ANY WAY IN THE INTEREST OF GOOD SPORTSMANSHIP AND SAFETY FOR EVERYONE****

Our Mission Statement

The Runestone GoKart Association is dedicated to providing a safe, healthy, and rewarding race track for all of the drivers, their families, employees, and spectators. RGKA is also dedicated to providing the highest quality racing program with the cornerstones of value learning, self-worth, sportsmanship, and transition for drivers to be productive and responsible participants in society.

The essential elements of character building and ethics in the Runestone Go Kart Association mission statement are embodied in the concept of sportsmanship and six core principles:

- 1. Trustworthiness*
- 2. Respect*
- 3. Responsibility*
- 4. Fairness*
- 5. Caring*
- 6. Good Citizenship*

Membership and Entry Fees

Membership Fee:

- First Driver: \$55.00
- Additional Driver in same family: \$35.00
- Waived for First Year Rookie Class Drivers

Driver Registration (Per Race):

- With membership: \$25.00
- Non-member: \$35.00
- Driver's pit pass is included with registration.

Additional Kart:

- \$10.00 for registered driver

Pit Pass:

- \$10.00 for Age 8 and up
- \$5.00 for Ages 2 - 7
- Free Admission for Under 2 yrs old, must be signed in and have wristband issued.

All waivers and code of conduct forms must be signed by a parent or legal guardian.

Each registered member is entitled to one vote per paid membership at the associated meetings and banquet.

With each paid RGKA membership, the driver will receive a year end trophy if a total of six points events were raced.

Race fee will be determined on a per race basis by the board for Non Points Races.

Registration

1. **Raceceivers and Transponders are mandatory for all karts racing at RGKA.** Both are available for nightly rental or rent-to-own option. Contact RGKA Board Members prior to pit meeting on race nights for rental needs.
2. **Transponders to be mounted no further forward than the center of the front spindles. RGKA recommends mounting via the transponder pouch attached to the bottom of the steering column.**
3. Karts and drivers must register for each event between 5:00 P.M. and 6:30 p.m. Anyone registering after 6:30 p.m. will not draw a number and will start in the back for both heat races.
4. Start times
 - i. Registration 5:00 PM to 6:30 PM
 - ii. Hot Laps: 6:30 PM
 - iii. Mandatory pit meeting: 6:50 PM
 - iv. Racing starts: 7PM
5. One number will be drawn for each driver per class. A parent must be present when the driver draws the number and registers the kart.
6. Ages for all classes are determined by the driver's age as of **May 1, 2021**. A birth certificate can be requested at any time during the race season.
7. All drivers must sign in at each event. The waivers and code of conduct must be signed by a parent or legal guardian prior to participating at any event.
8. Lineups:
 - a. Heat 1. Lower numbers drawn at check-in start towards the front.
 - b. Heat 2. Invert the heat 1 lineup
 - c. Feature
 - i. Lineup determined by the points from heat 1 and 2
 - ii. In case of a tie, the lowest number drawn at check-in will start closest to the front.
 - iii. The highest point drivers will be in the A feature and will be the final race of each class.
9. Our Rookies class is designated for drivers who are ages 5 to 8 years old and have little or no experience racing a go kart. This is a beginner class to have fun and develop driving skills. No points will be accumulated for the rookie class. A Rookie Driver may be asked to move up to the Sportsman or R-Box class at the board's discretion. If a Rookie Driver is asked to move up a class, it will not be counted as their first year in the Sportsman or R-Box class.
10. Rookie drivers will not be allowed to run in Wing classes while competing as a Rookie.
11. If a driver is allowed to run a race out of their age bracket, they will only be allowed to run that class for one race night. The driver must move to their appropriate age bracket after the one night introduction, at Board discretion.
12. Once a driver has entered into a class for 1 or more races, they will no longer be able to enter a class lower than the one they raced, at Board discretion.

Racing Rules

- RR1:** The flagman will have full control of the races subject to the rules. All decisions are final. No protest will be considered. No one will be allowed to personally confront the flagman or use profanity about a call during the races. Such behavior will be considered unsportsmanlike conduct. Please see **rule GR21** for consequences.
- RR2:** All karts must be lined up in the staging area for their race. If you are not in the staging area before your race you will start in the back of the pack. If there are mechanical problems between lineup and the green flag, the kart will have **two minutes** to repair and will be placed to the rear. If the kart is not repairable it must leave the track.
- RR3:** While on the track, drivers must remain in their karts, unless directed otherwise. Drivers leaving their karts may be disqualified from the race.
- RR4:** Drivers in any cageless class shall raise one arm over their head to signal following drivers when slowing abnormally, applying excessive brake, pulling off course, failing to accelerate normally, or warning other drivers of an impending hazard.
- RR5:** A driver, when being overtaken by a faster kart, should continue in a straight line and not swerve to one side or the other while being passed.
- RR6:** A kart stopping once on the track for mechanical reasons will have **two minutes** to repair and will be charged with a yellow flag and put to the rear. The **two minutes** will start when the kart reaches the staging area. The kart must leave the track if the kart is not repairable in the **two minute time period** and will receive last place points for that race. Any kart leaving the track will not be allowed back into that race.
- RR7:** Any kart asked to leave the track after the green flag has dropped for a mechanical or equipment failure that is deemed as a safety hazard, will receive last place points for that race.
- RR8:** No kart will race with a fuel leak or other items that the flag personnel feels is a safety hazard.
- RR9:** If a kart is involved in an accident and the flagman determines the kart **was not at fault** for the caution, they will have **two minutes** to repair their kart and will retain his or her position. The kart must leave the track if not repairable in the **two minute time period**.
- RR10:** Any kart causing a restart will be sent to the rear. This will include initial double wide starts or restarts. Each race will be allowed two cautions for the initial start of a race. After the second caution, the karts will line up single file. Any driver **causing two cautions** will be disqualified from that race and must leave the track receiving last place points for that race. Any **rookie causing three cautions** will be disqualified from that race and must leave the track.
- RR11:** On a restart, karts will be lined up in the position they held upon completion of the last full lap, as adjusted by the flagman for kart/s sent to the rear.
- RR12:** When the yellow caution occurs all karts must come to a slow place, and following instructions by the flagman through the raceceiver. Any karts needing to be restarted may do so without penalty only two times. Karts may be started only; **no repairs or tuning** will be allowed under a caution. Any kart caught making repairs or changing parts on a kart will be disqualified. This includes tire pressure and chassis adjustments.

- RR13:** All karts must stop when the red flag is out.
- RR14:** In the event of an accident on the track, ***only the track first aid personnel, track officials, and the driver's parents*** will be allowed on the track. All karts must stop on a red flag and will not proceed until a track official gives the okay. No one will be allowed on the track until all karts are completely stopped.
- RR15:** Any driver that receives a black flag for aggressive driving or unsportsmanlike behavior will be asked to leave the track and will not receive any points for that race.
- RR16:** In the event of an accident on the last lap after the checkered flag is given, all karts including the karts in the accident will be scored as they crossed the finish line in the last completed lap. The kart that the flagman determines as the cause of the accident will be charged with the caution and will receive last place points.
- RR17:** The track may tech a kart at any time and in any manner at the tech personnel's discretion.
- RR18:** If a substitute kart is utilized for backup, Tech must be notified prior to entering race and must have successfully passed tech inspection. If a backup kart is utilized during the event, ***the kart will go to the rear of the next race.***
- RR19:** When an engine is changed after the heat/qualifying races, a RGKA tech personnel must be notified. The motor must be brought to the tech shed before the feature event begins. If that kart places in the top two positions, both motors are subject to tech. Components such as carburetor, restrictor plate, and pipe must stay intact with the motor that comes out of the kart unless they are used on the replacement motor in which the tech personnel must be notified.
- RR20:** The top three karts must scale and report to the tech area at completion of race. The top two karts out of every A Feature race will be teched at the tech personnel's discretion. Each 3rd Place finisher from the A Feature in every class will draw a tech item at the end of the race. The top two karts will be teched and the third kart will stay in the tech area in case of a disqualification.
- RR21:** At the end of the season, the track will determine the points champion for each class by throwing out ONE lowest point night. ***ONE throw out night is granted to give the drivers an opportunity to do other sports, vacation, or race at another track.*** A disqualification due to a tech infractions will not be permitted as a throw out night. If there is a tie for championship, the tie breaker will go in the following chronological order: (1) Number of feature wins (2) Number of second place feature finishes (3) Number of third place feature finishes (4) Heat race wins.

RGKA Race Information			
Points		Race Lineup	
Heats		Rookie Class (Caged)	
Place	Points	Sportsman	
1 st	10	Junior 1	
2 nd	9	Junior 2	
3 rd	8	Adult	
4 th	7	R-Box Wing	
5 th	6	Junior Wing	
6 th	5	*Race Lineup Subject to Change Based Upon Kart Counts for Each Class	
7 th	4		
8 th	3		
A Feature		Event Laps	
Place	Points	Class	Laps
1 st	25	Rookies	
2 nd	23	Heat Races	6
3 rd	22	B/C Feature	8
4 th	21	A Feature	10
5 th	20		
6 th	19	Sportsman / R Box Wing	
7 th	18	Heat Races	8
8 th	17	B/C Feature	10
9 th	16	A Feature	12
10 th	15		
B Main			
Place	Points	JR 1 / JR 2 / Junior Wing / Adult	
1 st	Transfer to A Feature	Heat Races	8
2 nd	Transfer to A Feature	B/C Feature	10
3 rd	Transfer to A Feature	A Feature	15
4 th	14		
5 th	13		
6 th	12		

Ground Rules

GR1: **Pit passes are required in the pit area at *all times*.**

GR2: Prior to entering the pit area, all drivers and pit crew must pay all entry fees and sign a notarized waiver and code of conduct. Waivers for any minor (***all persons under the age of 18***), driver or non-driver, must have a parent or legal guardian sign all waivers including a one time minor waiver and pit pass waiver for every race event.

GR3: No alcoholic beverages are permitted on the premises during races. Anyone who has been determined to be under the influence of drugs or alcohol will not be allowed to participate in any of the competitions. Anyone who has been found or is suspected of being under the influence of drugs or alcohol will be denied entrance to the pit area or asked to leave if found after admittance and will be subject to GR21.

GR4: Required driver equipment includes the following:

- a) All drivers must wear a driving suit or jacket (no windbreakers or hooded sweatshirts)
- b) A properly fitted, **full-face helmet with shield; SNELL 2015 approved or better**
- c) Racing neck brace restraint is required
- d) Driving gloves
- e) Full toe and heel shoes
- f) Long pants
- g) If hair is longer than shoulder length, hair must be tied and tucked into the helmet
- h) Chest protectors are mandatory in all cageless classes**
- i) Rookie Cage and Wing Classes: Wrist restraints are required w/ attachment to lap belt connector.** (Please ask RGKA Board Member if you have any questions on attachment)

*****Safety equipment and restraint systems are subject to tech at any time*****

GR5: Kart numbers are registered on a first come first serve basis. Previous drivers will have first pick for numbers. Newer drivers may be required to add a letter along with their number for scoring purposes. Drivers may enter only one number per class. Drivers will drive only that number in which they register and no other driver may drive that number. It is recommended that the kart number be black, white, or contrasting colors from the background color to assist the scoring personnel.

GR6: The scoring personnel should be notified if someone other than a registered driver is driving the kart. The points go with the driver, not the kart. The score personnel should also be notified if a kart decides to scratch from a race so the lineup can be updated before the race starts.

GR7: On a low kart count night, the board may decide to run combined classes, but score based on their registered class.

GR8: If there is inclement weather or time restrictions, the RGKA board may implement time saving measures which may include but is not limited to reducing laps for each class.

GR9: In the instance of a rainout, a make-up day will be announced. If the race event is rained out after all heat races are completed, the program will continue on the make-up day. The races will resume at the point of interruption or at the RGKA boards discretion.

*****Check the RGKA Facebook page and/or website for details regarding rainouts*****

- GR10: The track is ***closed at all times*** other than racing events. Any kart caught on the track other than for a scheduled event, ***will be banned.***
- GR11: All trailers ***must be equipped*** with a fire extinguisher approved for methanol.
- GR12: No bicycles, motorized vehicles, scooter, or skate boards will be allowed in the pit area or on the track.
- GR13: No dumping of fuel, oil, tire prep, or any other chemicals on the fairground property.
- GR14: No smoking will be permitted in the staging area at any time.
- GR15: All karts must scale after each race. Failing to scale or in the instance of the kart being underweight, will result in the loss of points for that race.
- GR16: ***Runestone Go Kart Track follows NKA engine rules.***
- GR17: Tech infractions will result in the loss of all points and no trophy will be awarded for that night of events. The second offense ***will result in the loss of ALL points and a suspension for the remainder of the season. **During a suspension, a driver is not allowed to run any other classes*****
- GR18: At the last event of the season, if a kart is found to have a tech infraction they will lose its points for that night and the previous race event attended. *****This night will not be allowed to use as a throw out night at the end of the season*****
- GR19: A kart or engine may be protested upon the deposit of ***\$350.00 cash*** by the protesting party. ***The protestor must be a driver or a crewmember of a kart in the same class and must have raced that night's event.*** The protestor must contact a board member or tech personnel prior to the kart leaving the tech area. The party who has protested a kart must take his/her kart to the tech area until the tear down begins. If no discrepancies are found, \$250.00 is forfeited to the kart owner who was being protested and \$100.00 retained by RGKA to complete the teardown. If the protest is upheld, \$250.00 will be returned to the protesting party, \$100.00 retained by RGKA to complete the teardown, and RGKA will confiscate any and all illegal parts. ***Only the tech personnel, RGKA board members, and two members from both the protested and protestor's parties*** will be allowed in the tech building during the teardown process. A protest will be disallowed if any kart, including the protested party or the protestor's party, leaves the tech or restricted area. If a kart leaves the tech area without authorization, it is considered a violation and the kart will be deemed as an engine infraction. If there are any discrepancies with the protest, the RGKA board and tech personnel will retain the items in question for a third party opinion. *****Please see rule GR18 for consequences for having a tech infraction*****
- GR20: Denying a teardown will result in the same consequence as a tech infraction.
- GR21: ***Any unsportsmanlike conduct; i.e. swearing, arguing, or obscene gestures by a driver, crew member, or person representing a kart; will be penalized as follows:***
- a) If there is physical violence by any person at the track:
 - i) Immediate ejection from the race. Authorities will be called immediately.
 - ii) Lifetime ban of the offender.
 - b) Any acts of unsportsmanlike conduct by a driver or crew member:
 - i) First Offence:
 - (1) Immediate ejection from the race. If the person(s) refuse to leave after the first demand to leave, authorities will be called immediately.

- (2) Two race day suspension. A race day is the calendar date on which one or more races are held.
- ii) Second Offence:
 - (1) Suspension for the remainder of the season.
- iii) Third Offence:
 - (1) Lifetime ban of the individual.
- If the offense is caused by a board member all consequences above and removal from the board.
- c) **The track board members reserve the right to ask anyone to leave, temporarily or permanently if the board believes that someone is not adhering to the rules of the track, the spirit of fair play, and dealing appropriately with an all volunteer organization.** The board will not allow any person to ruin the spirit of fun and child development for the rest of the racers and their race group.
- d) All decisions by the board and it's members at the track, or at a meeting are final and will not be discussed after the decisions are made.

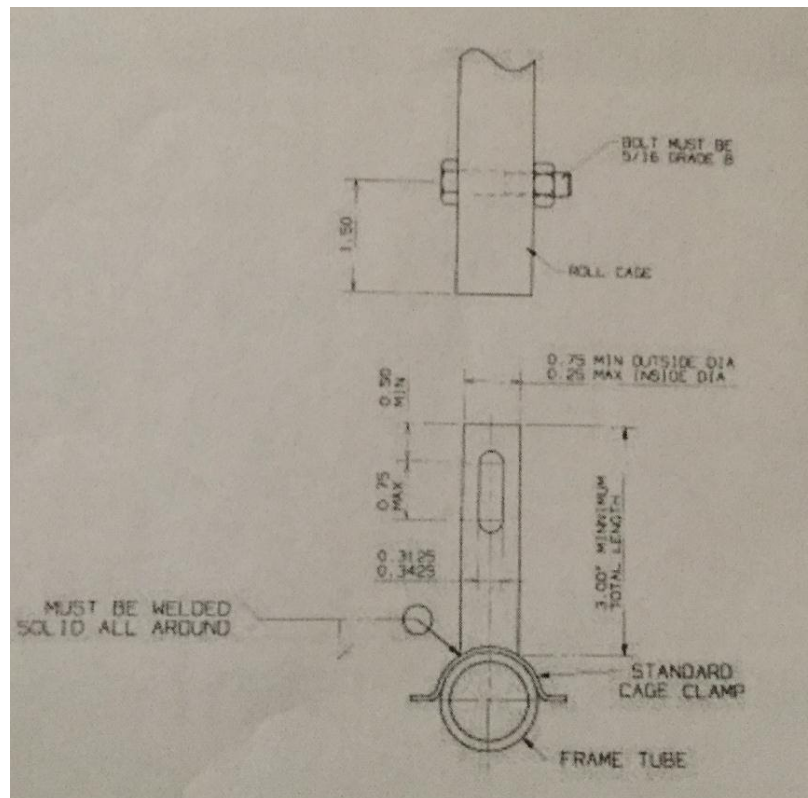
GR22: Dispute resolution of any race issue:

- a) No flagman calls, finish positions, points position or any other race dispute will be allowed to be discussed the night of any race. All calls are final.
- b) No discussion will be allowed with any individual board member at any time. Individual board members do not have the authority to make decisions for the association.
- c) If someone decides an issue needs further discussion
 - i) The person with the issue must request an agenda item be added to the next board meeting in writing to the association president.
 - ii) All information and data related to the issue (video, explanations, etc.) will be communicated to the board members at least 1 week prior to the board meeting. Discussion by phone with individual board members is not allowed.
 - iii) The person with the issue will be allowed an uninterrupted 5 minutes to explain their issue at the board meeting.
 - iv) Board members may ask questions and request answers from the person after their 5 minutes.
 - v) The person with the issue will then not interrupt the board while they are discussing the issue.
 - vi) The board may then make an immediate decision, may choose to delay a decision, or take no action on the issue.
 - vii) The board's decisions are final.

Chassis Rules

- CR1: No kart will be allowed to participate in the racing event if the kart has not been teched. The tech official will place a RGKA Tech sticker on the body of the kart to show proof of tech. ***A kart will not be allowed to race if there is no sticker present.***
- CR2: Bumpers for ***all classes*** are required.
- CR3: A sturdy nerf bar in front of the rear wheels is required on each side of the kart.
- CR4: **Tires:** The tire rim size is not to exceed **6 inches** in diameter.
- a) Slicks are mandatory for Rookie, Sportsman, JR1 and JR2 classes
 - b) Treaded tires are mandatory for Wing classes (NO PREP ALLOWED)
 - c) Open tire rule for Adult classes: Slicks or Treaded (NO prep allowed on treaded tires)
- CR5: **All weight added to meet minimum kart/driver weight requirements shall be bolted to the kart or seat with a minimum 5/16" or 8mm bolt. No more than 7 pounds permitted per bolt.** Weight over 7 pounds will require a minimum single 3/8 bolt, or two 5/16 bolts. **All bolts are to be double nutted**, with threads of at least 1/4" still visible. Drilling and using cotter pin/safety wire in addition to the double nuts is highly recommended. A minimum of a **1.50 inch washer** must be on the seat side of the weight bolted to the seat. **All weights are required to be painted white with the kart number on the weights in black.** If a weight falls off during any event, the kart will be disqualified from the event and will receive no points for that race event.
- CR6: All caged karts must be equipped with at least a four-point roll cage. The main bar must be steel tubing of no less than **1 inch O.D. x 0.083" Wall thickness.**
- CR7: The cage must be of sufficient height and width so that the drivers head, with a helmet on, leaves a minimum of **2 inches** safety clearance from the top and to any side bar. An additional crossbar over the drivers head is required.
- CR8: The width of the cage must be at least as wide as the driver's shoulders, plus **4 inches** of clearance at shoulder height.
- CR9: Mandatory safety equipment on all caged karts: Seat belts (in good condition), shoulder harness, wrist restraints and leg restraints (***leg restraints may either be a crossbar or leg straps***). No bungee cords are allowed. Seat belts must be fastened to the main frame of the kart with a minimum of a **.375 inch (3/8")** bolt that is grade 8. **The RGKA Tech personnel and/or RGKA board must approve these safety items.**
- CR10: All karts must have an adequate belly pan from the front of the seat forward.
- CR11: Brakes must be in good operating condition with two wheels locking. Rear brakes only. Wheel stub brakes are not allowed.
- CR12: Both brake and throttle must be operated by the driver's feet and must be within easy reach of the driver
- CR13: A tie strap on the plug wire is mandatory.
- CR14: A sturdy chain guard is required to extend **.50 inch** beyond the clutch and have a minimum overall length of 6 inches. There may be a **maximum of 1 inch** between the edge of the chain guard to the seat or have a side shield.

- CR15: Kart number must be placed on the front, back, and both sides of the kart. The numbers must be clearly legible. Side numbers must be at least **6 inches** in height. Rear and front numbers must be at least **4 inches** in height. The numbers must be of a contrasting color to the background color.
- CR16: Gas tank or engine components cannot extend past the rear bumper.
- CR17: Bolts and studs securing the header must be safety wired. Mufflers are mandatory and must be safety wired through the hole in the header brace. Safety wire should pass through the perforations on the end of the muffler. Do not weld on the muffler or drill holes in the muffler. Mufflers must be clamped to the header. Headers must be wrapped.
- CR18: No ratcheting or limited slip rear hubs are allowed.
- CR19: Wolf plate is required (Protection plate over disk brake rotor), not required on karts with brake on motor side.
- CR20: Fuel testing: RGKA will test gas and methanol with a density tester per sport standard methods.
- CR21: Restrictor Plates: All Animal Classes will run APS Plates. All Clone Classes will run ARC Plates.
- CR22: No springs, shocks, or struts may be mounted to the cage. Sliders and half heim joints are allowed. The cage mounting, integrity, and welds will be reviewed and teched. Below is an example of a slider:



Parent Code of Conduct

****Parent code of conduct is a part of the RGKA rules, if not followed consequences may be inflicted****

As a Parent:

- I will not force my child to participate in racing.
- I will remember that children race to have fun.
- I will inform the flagman and officials of any physical disability or ailment that may affect the safety of my child or the safety of others.
- I will learn the rules and the policies of the Runestone Go Kart Association.
- I will be a positive role model for my child and encourage sportsmanship by showing respect and courtesy and by demonstrating positive support for all drivers, crew members, flagman, officials, and spectators at every race.
- I will not engage in any kind of unsportsmanlike conduct with any driver, crew member, flagman, officials, or spectators such as booing, taunting, refusing to shake hands, or using profane language or gestures.
- I will not encourage any behaviors or practices that would endanger the health or well being of any other person.
- I will teach my child to race by the rules and to resolve conflicts without resorting to hostility or violence.
- I will demand that my child treat other racers, crew member, flagman, officials, and spectators with respect regardless of race, creed, color, sex, or ability.
- I will teach my child that doing one's best is more important than winning so that my child will never feel defeated by the outcome of a race or his/her performance.
- I will praise my child for competing fairly and trying hard and make my child feel like a winner every time.
- I will never ridicule or yell at my child or other participants for making a mistake or losing a race.
- I will emphasize skill development and practice racing through hot laps and how they benefit my child over winning. I will also de-emphasize races and competition in the lower age groups.
- I will promote the emotional and physical well being of the racers ahead of any personal desire I may have for my child to win. I will respect the officials and their authority during races and will never question, discuss, or confront the flagman or officials during any race. Also, if needed I will take time to speak with the flagmen or officials after all races are completed for the evening.

*****If not followed see GR21*****

2021 RGKA CLASSES

<i>Class</i>	<i>Motor</i>	<i>Restrictor</i>	<i>Tires</i>	<i>Weight</i>	<i>Ages</i>	<i>Notes</i>
Rookie Caged	AKRA 5HP FLAT BRIGGS	HORSTMAN .425 PURPLE PLATE	Slicks: Any Brand	265	5-8	All Rookie Karts will run together 2 Year Max Non-Points Class
	BRIGGS LO206 91 Octane	PURPLE SLIDE 555735				
	NKA ANIMAL	APS .225 PURPLE 3-HOLE PLATE				
	NKA CLONE	ARC.375 RED PLATE				
Sportsman	NKA ANIMAL	APS .225 PURPLE 3-HOLE PLATE	Slicks: Any Brand	235	6-9	RULE UPDATE 5/28/21: Animals & Clones will run & be scored together 2 Year Max
	NKA CLONE*	ARC .375 RED PLATE				
JR 1	NKA ANIMAL	APS .250 3-HOLE BLACK PLATE	Slicks: Any Brand	250	8-11	RULE UPDATE 5/28/21: Animals & Clones will run & be scored together
	NKA CLONE*	ARC .425 GREEN PLATE				
JR 2	NKA ANIMAL	APS.312 3-HOLE GOLD PLATE	Slicks: Any Brand	285	12-15	RULE UPDATE 5/28/21: Animals & Clones will run & be scored together
	NKA CLONE*	ARC .500 PURPLE PLATE				
Adult Open	UNRESTRICTED	-	OPEN: Slicks or Treaded (No Prep on Treaded)	375	15 & UP	4 Cycle Only No Shifters
R-Box Wing	CLONE (SEE RGKA RULE BOOK FOR FULL SPECS)	ARC .425 GREEN PLATE	Treaded: Any Brand (No Prep Allowed)	285	6-9	
Junior Wing	CLONE OR ANIMAL (SEE RGKA RULE BOOK FOR FULL SPECS)	-	Treaded: Any Brand (No Prep Allowed)	315	9-13	
* Clone Flat Karts: <ul style="list-style-type: none"> ○ Pump Gas 87-91 Octane/ Not to exceed ¾ pipe diameter / Mini B-91 Muffler 						
** Age determination date is May 1, 2021 for all classes						

2021 RGKA Wing Kart Rules

CHASSIS, BODY, AND GENERAL RULES FOR R-BOX AND JUNIOR WING CLASSES:

- RACECEIVER AND TRANSPONDER: Mandatory for all karts racing at RGKA. (Both are available for nightly rental or rent-to-own option)
- FUEL: Pump Gas 87-91 Octane ONLY
- CLUTCH: Open Clutch (No Wet Clutches or Jackshafts Allowed)
- WING: Box Stock Wings ONLY
 - Center panel 36" long x 32" wide, Right side panel 40" long x 14" wide, Left panel 40" Long x 20" wide. (All dimensions are +/- 3")
 - No air deflecting metal, plastic or, lexan material added to the wing.
 - No front wings or air directional devices allowed.
 - No cockpit adjustable wing sliders allowed
- RS PANEL: 3" Max lip on right side (RS) body panel, if used.
- SIDE PODS: Nerf bars may be covered but covering may not be attached to frame, nose cover, or roll cage. Must be attached to the nerf bar only.
- CAGE: No cage dampening devices allowed, i.e. shocks of any type.
- TIRES & WHEELS: Must run all 4 treaded tires.
 - Siping, grooving, and grinding of tires is allowed. (No grooved slick tires)
 - NO TIRE PREP/SOFTENER ALLOWED! (Tire wash/soap is ok)
 - **Mandatory 50 or 55 compound tire on right rear that must durometer 50+ (Must highlight RR 50-55 tire stamp with white paint pen for easy visibility to officials)**
 - Bead lock wheels are allowed.
- SEAT & RESTRAINTS: Must use aluminum racing seat designed for use with a 5-point harness.
 - Commercially manufactured 5-point seat belt harness required.
 - **Wrist restraints are required. Arm restraints must be attached to the lap belt and worn below the elbow.**
Safety equipment and restraint systems are subject to tech at any time
- APPEARANCE: The karts competing in this class must have a neat and clean appearance. Karts may be built by any competitor or manufacturer. The kart, as built, must comply with all Chassis Rules guidelines in the general RGKA Rules and Regulations.

ENGINE RULES:

R-BOX WING (Ages 6-9) (Weight: 285)

- **Clone Engine ONLY**

2021 NKA box stock rules will apply / Clone 196cc ONLY / ARC or Speed Karts .425 NO GO Green unaltered restrictor plate

**** Exceptions to NKA rules for R-Box class engine as follows ****

Box Stock cast rod -or- Bilet rod allowed, NO Titanium rods allowed / Big pipe with 4104 muffler allowed, no loop pipes, pipes and muffler MUST meet NKA rules for Adult Box Stock classes, must be inside the

roll cage and must exit towards the rear of the kart / Electric start nut maybe used in place of recoil starter

JUNIOR WING (Ages 9-13) (Weight: 315)

- **(2) Engine Options**
 1. Clone Engine: 2021 CLS BP Clone Rules
 2. Animal Engine: 2018 NKA Briggs Gas Animal Rules

Junior Wing Clone Engine:

2021 Cedar Lake Speedway (CLS) Builder Prepared (BP) clone engine rules / Gasoline only / NO PORTING allowed / Big pipe with 4104 muffler allowed, no loop pipes, pipes and muffler MUST meet NKA rules for Adult Box Stock classes, must be inside the roll cage and must exit towards the rear of the kart / Electric start nut maybe used in place of recoil starter / **Detailed 2021 CLS BP Clone Rules can be found on the 'Cedar Lake Arena Kart Racing' Facebook page or their website at www.clakarting.com , also available from RGKA upon request**

Junior Wing Animal Engine:

2018 NKA rules / Gasoline only / .255 running lift maximum at retainer / No duration checks / (Animal engines only) compression release cam NOT required if using electric start only, compression release cam must be used if using recoil starter, factory cast cam cores only/ Max main jet size .038 / Pilot jet .014 No go / No porting allowed / Big pipe with 4104 muffler allowed, no loop pipes, pipes and muffler MUST meet NKA rules for Adult Box Stock classes, must be inside the roll cage and must exit towards the rear of the kart / Electric start nut maybe used in place of recoil starter